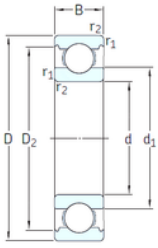




IMPORTED BEARING OF AMERICA CORP.



VA201



2Z/VA201



2Z/VA208



2Z/VA228

20 mm x 47 mm x 14 mm 20 mm x 47 mm x 14 mm SKF 6204-2Z/VA201 deep groove ball bearings

Bearing No. 6204-2Z/VA201

6204-2Z/VA201 Bearing 2D drawings and 3D CAD models

Size	20x47x14 mm
Bore Diameter	20 mm
Outer Diameter	47 mm
Width	14 mm
d	20 mm
D	47 mm
B	14 mm
C	14 mm
d1	28,8 mm
r1 min.	1 mm
r2 min.	1 mm
D2	40,6 mm
Weight	0,031 Kg
Temperature -	30 to +250 °
Basic static load rating (C0)	6,55 kN
Category	Single Row Ball Bearings
Inventory	0.0
Manufacturer Name	SKF
Minimum Buy Quantity	N/A
Weight / Kilogram	0.112
EAN	7316570739848
Product Group	B00308
Enclosure	2 Metal Shields
Precision Class	ABEC 1 ISO P0
Maximum Capacity / Filling	No



IMPORTED BEARING OF AMERICA CORP.

Slot	
Rolling Element	Ball Bearing
Snap Ring	No
Internal Special Features	Polyalkylene Glycol/Graphite Mixture Filled
Cage Material	Steel
Internal Clearance	C0-Medium
Inch - Metric	Metric
Long Description	20MM Bore; 47MM Outside Diameter; 14MM Outer Race Width; 2 Metal Shields; Ball Bearing; ABEC 1 ISO P0; No Filling Slot; No Snap Ring; Polyalkylene Glycol/Graphite Mixture Filled Internal Special Fea
Other Features	Deep Groove Extreme Temperature Variant
Category	Single Row Ball Bearing
UNSPSC	31171504
Harmonized Tariff Code	8482.10.50.68
Noun	Bearing
Keyword String	Ball
Manufacturer URL	http://www.skf.com
Manufacturer Item Number	6204-2Z/VA201
Weight / LBS	0.247
Inner Race Width	0 Inch 0 Millimeter
Bore	0.787 Inch 20 Millimeter
Outer Race Width	0.551 Inch 14 Millimeter
Outside Diameter	1.85 Inch 47 Millimeter
bore diameter:	20 mm
precision rating:	ABEC 3 (ISO Class 6)
outside diameter:	47 mm
finish/coating:	Uncoated



IMPORTED BEARING OF AMERICA CORP.

overall width:	14 mm
cage material:	Steel
bore type:	Round
outer ring width:	14 mm
closure type:	Double Shielded
fillet radius:	1 mm
row type & fill slot:	Single Row Non-Fill Slot
maximum rpm:	260 RPM
internal clearance:	C0
series:	62
operating temperature range:	-20 to +480 ° F
resistance features:	Corrosion Resistant, Extreme Temperature
static load capacity:	6.55 kN
d_1	28.8 mm
D_2	40.59 mm
$r_{1,2}$ min.	1 mm
d_a min.	25.6 mm
d_a max.	28.7 mm
D_a max.	41.4 mm
r_a max.	1 mm
Basic dynamic load rating C	13.5 kN
Basic static load rating C_0	6.55 kN
Limiting speed	130 r/min
Limiting temperature T max.	250 ° C
Mass bearing	0.11 kg