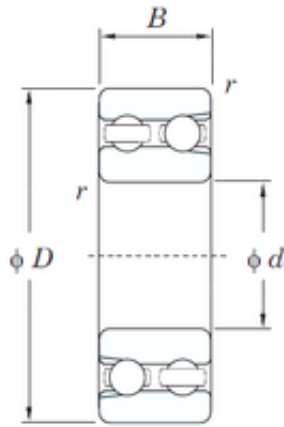




## IMPORTED BEARING OF AMERICA CORP.



25 mm x 52 mm x 18 mm 25 mm x 52 mm x 18 mm KOYO 4205 deep groove ball bearings

Bearing No. 4205

4205 Bearing 2D drawings and 3D CAD models

Size	25x52x18 mm
Bore Diameter	25 mm
Outer Diameter	52 mm
Width	18 mm
d	25 mm
D	52 mm
B	18 mm
C	18 mm
r min.	1 mm
da min.	30 mm
Da max.	47 mm
ra max.	1 mm
Weight	0.189 Kg
Basic dynamic load rating (C)	16.3 kN
Basic static load rating (C0)	16.9 kN
(Grease) Lubrication Speed	7500 r/min
(Oil) Lubrication Speed	9900 r/min
Bearing No.	4205
r(min)	1
Cr	20.4
C0r	16.9
Cu	1.05
f0	15.0
Grease lub.	7500
Oil lub.	9900



## IMPORTED BEARING OF AMERICA CORP.

da(min)	30
Da(max)	47
ra(max)	1
(Refer.)Mass(kg)	0.189